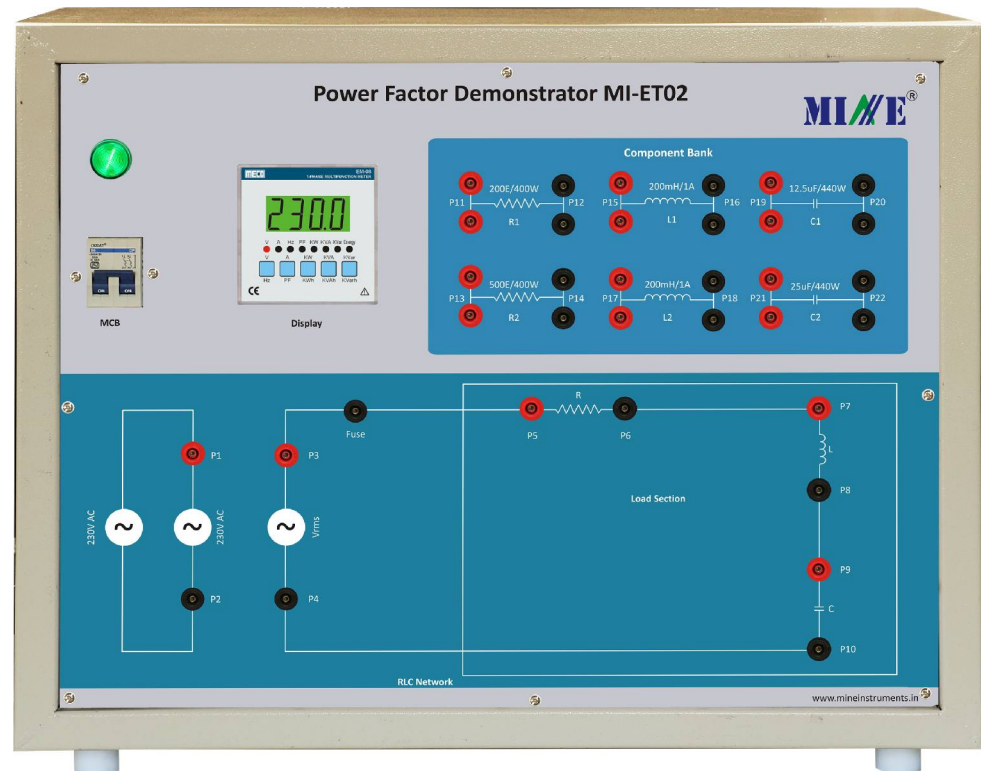


Power Factor Demonstrator MI-ET02



Mine MI-ET02 Power Factor Demonstrator is an extremely useful laboratory kit which provides facilities for hands on experience to various experiments in the field of electrical trainer and provides all necessary inputs and connections for students to study Measurement of Power Factor at Resistive (R) Load, Resistive and Inductive (R-L) Load, Resistive and Capacitive (R-C) Load & Resistive, Inductive and Capacitive (R-L-C) Load and Analysis and improvement of Power Factor of RL, RC & RLC network through Capacitor.

Features

- ❖ Micro controller Based Multifunctional Meter with high accuracy and resolution
- ❖ Equipped with inbuilt R, L and C load required for experiment
- ❖ Supply Indicator
- ❖ Diagrammatic representation on front panel.
- ❖ Built in Protection devices.

Power Factor Demonstrator

MI-ET02



Technical Specifications

MCB (SPN)	:	2A
Digital Meter	:	Multi-functional Meter.
Measuring Parameter	:	Voltage, Current, Active Power, Apparent Power, Reactive Power.
Resistance	:	500E/400W 200E/400W
Capacitor	:	12.5 μ F 440/450V 20 μ F 440/450V.
Inductor	:	200mH/1A (2nos)
Main Supply	:	230V AC, \pm 10%, 50Hz.
Dimensions (in mm)	:	W 650 x H 500 x D 350 (approx.)

Learning's

- ❖ Measurement of Power Factor at
 - Resistive (R) Load
 - Resistive and Inductive (R-L) Load
 - Resistive and Capacitive (R-C) Load
 - Resistive, Inductive and Capacitive (R-L-C) Load.
- ❖ Analysis and improvement of Power Factor of RL, RC & RLC network through Capacitor.

Accessories



Patch Cord



User Manual

Mine Instruments Pvt. Ltd.

67-B, First Floor, Electronic Complex, Pardeshipura, Indore-452010 (M.P.) India
e-mail: info@mineinstruments.in, mineinstruments@gmail.com
Tele Fax: +91-731-4246503, +91-6262603222
More information: www.mineinstruments.in

Regional Contacts-

East : +91-6262608000
North : +91-6262605000
South : +91-6262601000
West : +91-6262609000