



Mine MI-ET03 Kirchhoff's Law Trainer has been designed specifically to demonstrate the importance of Kirchhoff's Law. This kit is an extremely useful laboratory kit which provides facilities for hands on experience to various experiments in the field of Electrical trainer and provides all necessary inputs and connections for students to study Kirchhoff's Law Circuit. This is a standalone kit which comes with inbuilt power supply, digital panel meters & other useful resources. This is helpful in making learning simple, at the same time while making experimentations on it.

Features

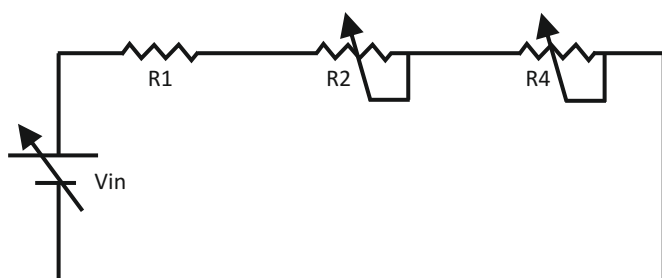
- ❖ Stand alone unit, requires no extra accessories
- ❖ Exclusive and compact design
- ❖ In-built DC power supply
- ❖ In-built DC Ammeter & DC Voltmeter
- ❖ Diagrammatic representation for the ease of connections
- ❖ Symbols and Diagram are printed on glass epoxy PCB
- ❖ Attractive ABS Plastic Cabinet

Technical Specifications

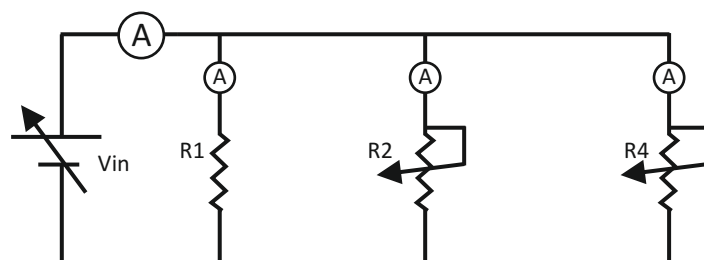
Variable DC Power Supply	:	0 to +12V
Adequate number of components to perform the experiments		
Fuse	:	500 mA
Variable Resistance	:	2nos
DC Ammeter:		
Range	:	Upto 2A
DC Voltmeter :		
Range	:	Upto 20V
Weight	:	2 kg.(Approx)
Input Line Voltage	:	230V AC, ± 10% 50 Hz
Dimensions (mm)	:	270 (L) x 170 (W) x 62 (H).(Approx)

Learning's

- ❖ Verification of Kirchhoff's Voltage Law.
- ❖ Verification of Kirchhoff's Current Law.



$$V = V_1 + V_2 + V_4$$



$$I_T = I_1 + I_2 + I_4$$

Circuit Diagram of Kirchhoff's Voltage Law & Kirchhoff's Current Law

Package Contents



Power Cable



Patch Cord



User Manual

Mine Instruments Pvt. Ltd. An ISO 9001:2015 Certified Company

67-B, First Floor, Electronic Complex, Pardeshipura, Indore-452010 (M.P.) India

e-mail: info@mineinstruments.com; sales@mineinstruments.com

www.mineinstruments.com; www.mineinstruments.in, ☎ +91-731-4246503 📞 +91-6262603222, +91-6262603777

Regional ☎ East : +91-6262601000

West : +91-6262605000

North : +91-6262609000

South : +91-6262608000

Emails- east@mineinstruments.com | west@mineinstruments.com | north@mineinstruments.com | south@mineinstruments.com

